

Company Profile

2025





Muhammad ibn Musa al-Khwarizmi
(781-847)

Working Wisely

Zero was present in the Indian numerals, but it did not mean anything until Al-Khwarizmi gave it a value, making it a multiple of ten, thus achieving the places of tens, hundreds, thousands..etc.

Likewise, at amem we give value to things. By putting them in their proper place, we act wisely.

Contents

01

Starting

02

Experience

03

Products

04

Services

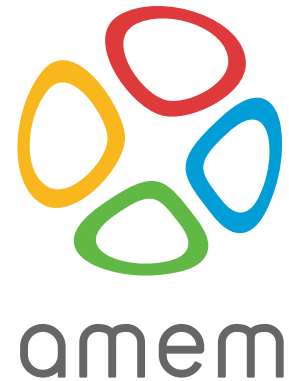


Starting

Our Mission

We enjoy every detail of the story we write...

At Amem, our mission is to revolutionize the way businesses operate through innovative technology solutions. With a focus on optimizing operations, we strive to reduce costs and enhance efficiency for our clients. At the core of our philosophy is the commitment to build reliable systems that empower organizations to thrive in an ever-evolving digital landscape. Our team of experts combines industry knowledge with cutting-edge technology to deliver tailored solutions that not only meet the unique needs of our customers but also drive sustainable growth and success. Join us as we navigate the future of IT together, transforming challenges into opportunities for excellence.



Our business is built on four major pillars:



innovation



research and
development



perfection



continuous
improvement

First Project

"The first step is always the hardest... stop thinking about it, just take it"

We began with a medical education startup as our first step. The company had contracted with a developer to develop its own e-learning platform over a two-year period, but the project was unable to begin due to a lack of operational readiness.

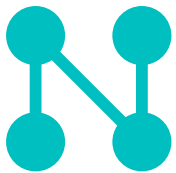
We accepted the challenge, began analyzing and researching the various options, and launched the platform in record time, thanks be to God. Without any technical issues, the number of beneficiaries reached 23 thousand users. Not only that, but we have organized and coordinated all internal and external operations to ensure a smooth flow of work. The automation of many tasks has had the greatest impact in allowing this business to make rapid progress. The work we have done necessitates the efforts of a number of companies.



Experience

Team Experience

We work as a team, and everyone brings a unique set of experiences to the table...



Networks



**Information
Security**



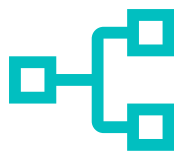
**Programming and
Development**



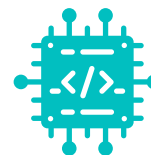
**Systems
Administration
and Operation**



**Monitoring
and Systems
Analysis**



**Decision
Making**



**Specialized
Solutions**



**Reliability and
Risk Analysis**

Worked On

Our team has a wealth of experience, having worked with a wide range of commercial and open source products...



Worked With

Our team has a wide range of personal experiences, and we have dealt with numerous parties in the past





CORNEA is a Monitoring and Evaluation (M&E) solution. M&E is a process used in international development to verify that goals are accomplished and resources are allocated properly. Same concept applies in IT operations, which will improve service quality and increase customer satisfaction.

Three key areas are where IT professionals can benefit from CORNEA:

Decrease MTTR

The platform helps to reduce MTTR and related expenses by offering quicker answers to outages and other issues. Also, it improves overall performance.

Proactive performance monitoring

Develop a performance monitoring technique that is more proactive. Through the integration of application environment data, AIOps solutions establish a link between business outcomes and performance insights.

Drive faster and better decision-making

IT workers may make better and quicker decisions by using CORNEA to uncover insights.

Multiple Data Sources

Metrics

- Cloud-readiness.
- Easy to Configure.
- High Scalability.
- Long-term Metrics Storage.

Logs

- Easy to Setup and Operate.
- Linear Scalability
- Multi-tenancy Support
- Powerful Query Language with Full Text Search



Orga is a platform built to simplify the organization of scientific events.

From managing your committees and projects to providing your administrative office and membership services, we will be a trusted, consistent, and integral extension of your organization, assisting you to create your community and achieve your goals.

Event Management

- Customizable ticket shop.
- Marketing toolkit.
- Reports & Statistics.
- Individual Tickets.
- Direct Payment.
- Check-in & Box office.

Membership Management

- Efficient membership applications and renewals.
- Members' area and directory online.
- Membership research, planning, and growth.

Digital Publishing

- Conference Proceedings.
- Abstract Books.
- Posters.
- Banners.

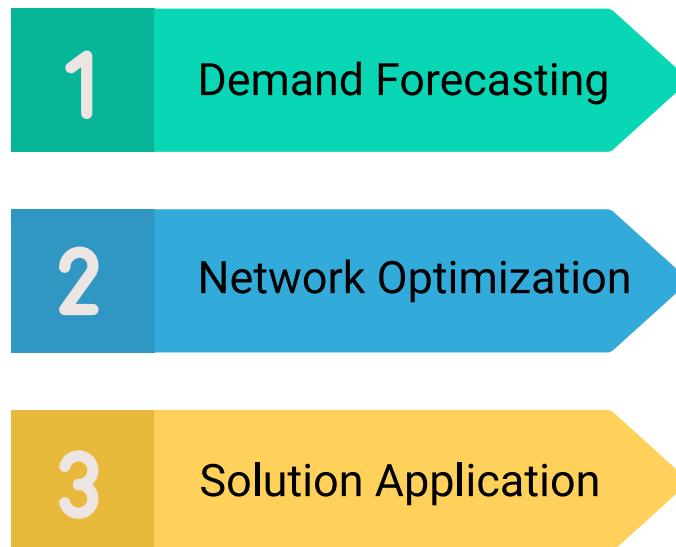
Society Management

- Professional financial assistance.
- General meetings and award ceremonies.
- Project management.



Starfish is a load distribution service that helps you make the most of your available resources. Whether you need to balance traffic across different providers, assign pilgrims to accommodations and transportation, or solve other complex assignment problems, *starfish* has got you covered. With its advanced algorithms, *starfish* optimizes resource utilization and ensures efficient and effective distribution.

Example on network Border Gateway Protocol (BGP) load distribution





DOC-JAR is a documentation service that helps you to make the most of your available resources. It is an end-to-end service that meets your requirements. The documentation ecosystem is critical for better decision-making. We support both *static* and *dynamic* documentation types.

Static Documentation

- Reports.
- Documents.
- Diagrams.

Dynamic Documentation

- WiKi pages.
- Knowledge base.
- Live infrastructure status.



OCTOOPS

OctoOps is a managed IT services that is beneficial for both large organizations and small businesses; new companies and established ones.



Evaluation

Assess current services and make recommendations based on business goals and requirements.



Design and Implementation

Effective service design requires knowledge and experience to ensure successful implementation.



Operation

Executing requirements according to business objectives to build fast, reliable and efficient services.



Optimization

enhancing services' performance based on research, analysis, and alignment with client needs.



Error Detection

It takes expertise and knowledge to identify issues and offer suitable fixes.



Security

Integrate defense and security measures to help protect the organization.



O11 offers IT consulting services with knowledge of network security design and implementation.

We provide a solution customized to your unique needs and financial situation. We collaborate with your business to create safe, dependable, and simple networks to manage. Using our skills and abilities, we offer network services that seamlessly integrate with your current IT systems.

Utilizing our novel **Multi-state Site reliability engineering (MSRE)** approach, which is a collection of principles and methods for applying software engineering concepts to IT infrastructure and operations. MSRE is used to build reliable and scalable IT systems.

Management

Development

Security

Operations

Network Solution Services



Manage and provide public IPv4 and IPv6 addresses.



Firewall design and management.



Capacity planning and forecasting.



Networks operation and optimization.



Study and evaluation of network reliability.



Networks and systems analysis and risk identification.



Keeping up with the latest and best software for your business is sometimes more effort than it's worth. Installing, setting, and protecting the most recent software suites might be more complicated than it looks; however, the specialists at #run can assist.

Advances in software are changing practically every aspect of our lives. From simple accounting and sales tracking to collaborative project management, the software is designed to assist organizations of all sizes increase productivity.

Whether you need work-order software or a web-based administrative dashboard, the installation process is dictated by the program and operating system on your system. Software installation is a straightforward process for experienced engineers, but it may be frustrating for other users. Incorrect or failed installations can have a substantial effect on productivity.

Benefit from our software installation services, which can:

- lessen vulnerability to viruses.
- Boost the security of the network.
- Stop data loss.
- Increase performance.
- Reduced possibility of corrupt or pirated software.

The background is a solid blue color with a dense pattern of white line-art icons. These icons include various computer-related symbols: a laptop, a tablet with a hand pointing at it, a folder, a cloud, a battery, a gear, a lightbulb, a smartphone, a mouse, a keyboard with hands typing, a person at a computer, a pencil, a book, a wrench, a question mark, a brain, a speech bubble, a star, a hash symbol, and several binary code strings (e.g., 1001101001, 100110, 1101001).

#run Examples

ERPNext

ERPNext is the world's leading 100% open source ERP solution, supporting manufacturing, distribution, retail, trade, services, education, non-profits, and healthcare.



Financial Accounting

Get a real-time view of your cash flow. Full-fledged accounting module covering every aspect of bookkeeping.



Order Management

Increase productivity and lower costs by managing your sales and purchase cycles, from purchase to sales orders.



HR and Payroll

Manage full employee life cycle right from onboarding, payroll, attendance, expense claims, assets to separation.



Manufacturing

Effectively maintain and manage multilevel bill of materials, production planning, job cards & inventory.



CRM

Win and retain more customers by optimizing the sales process. Track leads, opportunities, and send the quotes on the go.



Projects

Deliver both internal and external projects on time, budget, and profitability. Track tasks, timesheets, and issues by project.



Helpdesk

Deliver a better service experience with an intuitive issue tracker and an integrated knowledge base.



Asset Management

Maintain and Manage details of assets, their movement, value adjustment, and depreciation.



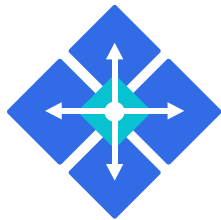
Website

ERPNext comes with fully-featured content management with blogs, web pages, and forms.



kubernetes

Kubernetes, also known as K8s, is an open source system for automating deployment, scaling, and management of containerized applications.

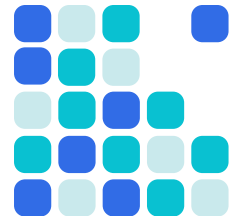


Planet Scale

Designed on the same principles that allow Google to run billions of containers a week, Kubernetes can scale without increasing your operations team.

Never Outgrow

Whether testing locally or running a global enterprise, Kubernetes flexibility grows with you to deliver your applications consistently and easily no matter how complex your need is.



Run K8s Anywhere

Kubernetes is open source giving you the freedom to take advantage of on-premises, hybrid, or public cloud infrastructure, letting you effortlessly move workloads to where it matters to you.



NetBox is the industry standard for modeling and documenting contemporary network. It offers the perfect "source of truth" to drive network automation by merging the established fields of IP address management (IPAM) and datacenter infrastructure management (DCIM) with strong APIs and extensions. Continue reading to learn why NetBox is the foundation of millions of companies' infrastructures globally.

Built for Networks

Unlike general-purpose CMDBs, NetBox has created a data model tailored exclusively to the requirements of network engineers and operators. It provides a diverse range of object types that have been carefully created to best meet the requirements of infrastructure design and documentation. These cover all parts of network technology, including IP address management, cabling, overlays, and more:

- Hierarchical regions, sites, and locations.
- Racks, devices, and device components.
- Cables and wireless connections.
- Power distribution tracking.
- Data circuits and providers.
- Virtual machines and clusters.
- IP prefixes, ranges, and addresses.
- VRFs and route targets.
- FHRP groups (VRRP, HSRP, etc.)
- AS numbers.
- VLANs and scoped VLAN groups.
- L2VPN overlays.
- Tenancy assignments.
- Contact management.



Proxmox delivers powerful, enterprise-grade solutions with full access to all functionality for everyone - highly reliable and secure. The software-defined and open platforms are easy to deploy, manage and budget for.

Proxmox

Virtual Environment

Proxmox Virtual Environment is a complete open-source platform for enterprise virtualization. With the built-in web interface you can easily manage VMs and containers, software-defined storage and networking, high-availability clustering, and multiple out-of-the-box tools using a single solution.

Proxmox

Backup Server

Proxmox Backup Server is an enterprise backup solution for backing up and restoring VMs, containers, and physical hosts. The open-source solution supports incremental backups, deduplication, Zstandard compression, and authenticated encryption.

Proxmox

Mail Gateway

Proxmox Mail Gateway is an open-source email security solution that protects your mail server against all email threats from the moment they emerge. The full featured mail proxy can be easily deployed between the firewall and your internal mail server in just a few minutes.



VyOS dramatically change how we access networks so that we can all build the solutions we always dreamed of, without restrictions, limitations, or prohibitive costs..

Features

For All Network Device Roles



Routing

BGP (IPv4 and IPv6), OSPF (v2 and v3), RIP and RIPng, policy-based routing.



VPN

IPsec, VTI, VXLAN, L2TPv3, L2TP / IPsec and PPTP servers, tunnel interfaces (GRE, IPsec, SIT), OpenVPN in client, server, or site-to-site mode, wireguard.



Firewall and NAT

Stateful firewalls, zone-based firewall, all types of source and destination NAT (one to one, one to many, many to many).



Network services

DHCP and DHCPv6 server and relay, IPv6 RA, DNS forwarding, TFTP server, web proxy, PPPoE access concentrator, NetFlow / sFlow sensor, QoS.



High availability

VRRP for IPv4 and IPv6, ability to execute custom health checks and transition scripts; ECMP, stateful load balancing.



Fully Open Source

Its entire codebase and build toolchain are available to everyone for auditing, building customized images, and contributing.



amem company for communication
and information technology

2970, Fahad ibn Zuair

Jeddah, 23522

Saudi Arabia

E-mail: contact@amem.io



